



INTEGRATED INSTITUTE OF PROFESSIONAL MANAGEMENT, ABUJA

2021 TRAINING AND CERTIFICATION PROGRAMMES

Advance Your Career With Internationally Recognized Certifications and Membership Certifications.

EXECUTIVE CERTIFICATION PROGRAMMES

- ◆ CERTIFIED INTERNATIONAL MANAGEMENT CONSULTANT
- ◆ CERTIFIED EMOTIONAL INTELLIGENCE PROFESSIONAL
- ◆ EXECUTIVE LEADERSHIP AND MANAGEMENT DEVELOPMENT
- ◆ CERTIFIED CRISIS AND CONFLICT MANAGEMENT EXPERT

PROFESSIONAL CERTIFICATION PROGRAMMES

- ◆ PROJECT MANAGEMENT PROFESSIONAL
- ◆ GLOBAL HUMAN RESOURCE MANAGEMENT PROFESSIONAL
- ◆ HEALTH SAFETY AND ENVIRONMENT MANAGEMENT PROFESSIONAL
- ◆ STRATEGIC BUSINESS MANAGEMENT PROFESSIONAL
- ◆ INTERNATIONAL CUSTOMER RELATIONSHIP MANAGEMENT PROFESSIONAL

APPLY ONLINE FOR FREE

➔ **WWW.IIPMI.ORG**

We are receiving application now.

**CLASSES STARTING
February 6, 2021**

All Classes are Currently 100% Online

2021 TRAINING SCHEDULE

1ST DIET: Feb. 6 - Mar. 27, 2021

2ND DIET: May 8- July 10, 2021

3RD DIET: Sept. 11- Dec. 11, 2021

Please, download the detailed brochure to see each course schedule>>> www.iipmi.org

ACCREDITATIONS AND PARTNERSHIPS



The Integrated Institute of Professional Management is a renowned training and certification institute in Nigeria with international affiliations. IIPM is accredited by Federal Ministry of Education, Nigeria, Chartered Institute of Management Consultants, USA, Society for Human Resource Management, USA and affiliated with Professional Evaluation and Certification Board, Canada.

High-Performance Global Business Skills To Help You Advance Your Career

How will you get ahead of the competition? Attract recruiters and advance speedily in your career and business -learn the skills and get the certifications you need to succeed in this 21st Century.



The IIPM Difference

- IIPM is a legally registered professional body in Nigeria with international reputation offering professional training, certifications, memberships and licenses to individuals and organizations.
- IIPM offers quality-driven training with intensive practicals.
- Certifications are internationally recognized.
- Training cost is affordable.
- Payment is flexible.

Flexible and Structured Programs

- Learn at your own pace at shorter times.
- Study and Get Certified Within 4 - 10 weeks.
- 100% Online Programs Available
- Weekend (Saturdays & Sundays) Available,

Starting from N0.00 (\$0)

Affordable training fees with flexible payment plans for both Nigerian and foreign prospects.

Optional Fees Cover

Training Manuals, Examination and Certification.

4 - 12 Contacts Duration

Average time it takes to complete our certification programs.



RC 1257013

ABOUT US

The Integrated Institute of Professional Management (IIPM) International is a legally registered professional training and certification Institute with international reputation. IIPM International is legally registered by the Corporate Affairs Commission of Nigeria and accredited by the Federal Ministry of Education. Internationally, IIPM International is accredited by Society for Human Resource Management, USA. IIPM International trains and certifies under internationally recognized standards as International Organization for Standardization (ISO) and Project Management Institute, USA.

IIPM International is affiliated with Professional Evaluation and Certification Board, Canada; accredited by International Accreditation Service (IAS) for ISO international certifications.

By partnership, IIPM International is a in partnership with the University of Nigeria, Nsukka, University of Lagos. Akoka, and National Youth Service Corps of Nigeria among other prestigious institutions.

IIPM International board is comprised of diverse and quality professionals like Prof. P. O. Uvere, Dr. Lanre Philips, Dr. Chris Molen, Barr. P. N. Nwachukwu and Eburuche Banito.

We provide cutting edge training and development for individuals and organizations, as well as consulting and HR services.

Real-World High-Performance Job Skills and Certifications

Learn by doing. Master relevant professional skills needed in the 21st century workplace.

Develop hard and soft skills in leadership, technology, innovation, finance and budgeting, marketing, emotional intelligence, management and sustainability and get ahead in the global workforce.



Accreditations and Standards

Get Trained, Certified and Licensed By International Standards



Support At All Times

Enjoy dedicated team on your side before, during and after training. Our success advisors and faculty provide personalized support so you can reach your career and business goals.

Personalized Success/Career Advisors

Career and Business Networking Events

Community of Worldwide Professionals

Abuja: 3, Durban Str., Wuse. | +2347018705699

Lagos: 10 Bisi Ogabi Str., Ikeja | 08020612627

Ready To Get Ahead
APPLY NOW FOR FREE: WWW.IIPMI.ORG/ADMISSION/

PROJECT MANAGEMENT CERTIFIED PROFESSIONAL

Get on top of your career with internationally recognized certification in Project Management.
Become a Project Management Certified Professional with Agile Project Management.

Approved International Standards of Project Management Institute, USA with ISO International Methodology.

Certification offered in affiliation with Professional Evaluation and Certification Board, Canada.

First Batch: May 8 - July 10, 2021
Second Batch: Sept. 11 - Dec. 11, 2021
Classes: 100% Online Via Zoom

Apply at
<https://iipmi.org/pmp/register/>



ABOUT THIS COURSE

Project Management skills have become the most sought-after skills by employers while Project Management Professional and Agile Project Management Certifications have become the most employed and respected globally. To drive beneficial change in the business world today, high level dynamism, flexibility and innovation with focused transformational leadership have become critical. High-performing organizations today run projectized structures that give them strong competitive advantage and deliver superior results. By becoming a Certified Project Management Professional and Agile Project Management Professional, you will learn invaluable skills that will set you on top of your career. The course is offered alongside Microsoft Project Professional which gives practical advantage to all participants.

COURSE CONTENTS

PROJECT MANAGEMENT PROFESSIONAL

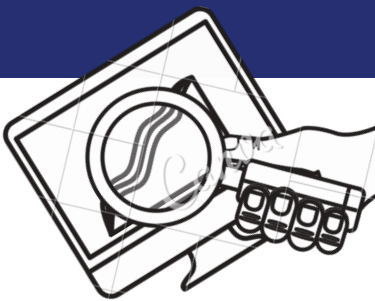
- Foundation of Project Management.
- Project Management Framework.
- Project Management Environment.
- Project Integration Management.
- Project Scope Management.
- Project Schedule Management.
- Project Cost Management.
- Project Quality Management.
- Project Resources Management
- Project Communication Management.
- Project Risk Management.
- Project Procurement Management.
- Project Stakeholder Management.
- Project Computational Analysis

AGILE PROJECT MANAGEMENT PROFESSIONAL

- Introduction to Agile Project Management Life Cycle
- Selection Creating An Agile Environment
- Delivering An Agile Environment
- Organizational Considerations for Project Agility
- Agile Manifesto Mapping Agile and Lean Frameworks

WHO SHOULD ATTEND?

Strategic planners, real estate developers, career persons, ICT experts, engineers, accountants, business executives, all managers, management and financial experts, CEOs, directors, heads of departments, supervisors, safety experts, executives, marine, oil & gas, aviation and telecommunication workers and others.



PHYSICAL INCLASS FEES

Certified Associate Project Management Professional: N125,000 (\$330)
Certified Lead Project Management Professional: N175,000 (\$460)

Fees cover training, light refreshment, hardcopy manuals, examinations and certifications.

Payment Details

Account Name: Integrated Institute of Professional Management
Account Number: 1020017605
Bank: United Bank for Africa PLC.
ONLINE PAYMENT: <https://paystack.com/pay/iipm>

ONLINE FEES

ONLINE FEES	Course Level	Reg. Fee	Adm. Fee	Tuition Fee	Training Manuals	Exam. Fee	Cert. Fee
	Associate 3 weekends	N0.00 \$0.00	N0.00 \$0.00	N0.00 \$0.00	N7,5000 \$20.00	N25,000 \$65.00	N32,500 \$85.00
	Lead 4 weekends	N0.00 \$0.00	N0.00 \$0.00	N0.00 \$0.00	N10,000 \$25.00	N32,000 \$85	N43,000 \$115.00

Important Note:

Application, admission and training are 100% FREE ONLINE

WHAT TO EXPECT



Study and Enjoy
100% FREE ONLINE



PMI PMBOK Global Standard
With FREE Copy of
Most Recent Professional Guide



E-Breaks
and Relaxation



Projected Lectures and
multimedia Integration
With case study analysis sessions.



Quality and Practical-oriented
Training by Quality and
Experienced Professionals



Conducive Learning
Environment

Who Should Attend?

Strategic planners, real estate developers, career persons, ICT experts, engineers, accountants, business executives, all managers, management and financial experts, CEOs, directors, heads of departments, supervisors, safety experts, executives, marine, oil & gas, aviation, agriculturists, medical and health personnel, food and beverage, all in manufacturing and production, and telecommunication workers and others.

GLOBAL HUMAN RESOURCES MANAGEMENT CERTIFIED PROFESSIONAL

Get on top of your career with internationally recognized certification
in Global Human Resources Management.
Become a Certified and Licensed Global Human Resources Management Professional.

Accredited by Society for Human Resource Management, United States of America.



SOCIETY FOR HUMAN
RESOURCE MANAGEMENT



PECB

First Batch: May 8 - July 10, 2021

Second Batch: Sept. 11 - Dec. 11,
2021

Classes: 100% Online Via Zoom

Apply at

<https://iipmi.org/hrm/register>

ABOUT THIS COURSE

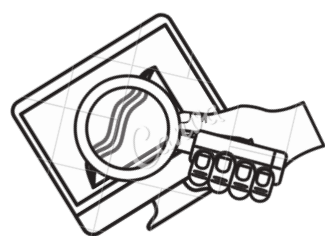
The number one capital asset of any firm is the quality of the human capital it operates with. Building an infallible team with marching capacities for high-level productivity, effectiveness and performance, creates not just a competitive advantage but also a sustainable advantage. Any company can be good but to have a great company, you must have a great team. The assignment to accomplish the task of building a great team rests on the shoulders of the Human Resource Manager. The human resource manager must be groomed emotionally, intellectually, strategically, management, leadership and business-wise to be able to coordinate the most delicate aspect of any corporate firm: human resources. In this course, trainees will be espoused to high-performance skills needed for organizational and behavior modelling, recruitment and retention, team management, employee relations and safety, change management, human capital management, information/communication, behavioral psychology, job and role design and evaluation, stress management, rewards management, conflict management, motivation strategies and HR auditing among others.

GHRMP is offered in three levels with computer-aided training in Microsoft Access Professional (MSAP), HR Control Center and OpenSource Orange HRM applications.

COURSE CONTENTS

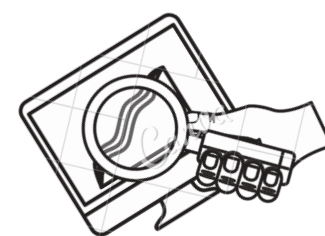
Level One: HRM Diploma Certification

- Overview of Management
- Essentials of human resources management.
- Human Resource Skills.
- Human Resource Planning.
- Training and development.
- Job, Role and Competency Analysis.
- Job Design.
- Job Evaluation.
- Recruitment and Selection.
- Employee Motivation.
- Performance Management (Part 1).
- Employee Retention.
- Organization Design and Development.
- HRM Versus Business Management.
- Introduction To Organization



Level Two: Associate HR Professional Certification

- Overview of Strategic Management
- Strategic Human Resource Management Framework
- Strategic Role of Human Resource Department
- Employee Resourcing Strategy
- Employee Relations Strategy
- Human Capital Management Strategy
- Knowledge Management Strategy
- High Performance Management Strategy
- Organization Development Strategy
- Talent Management Strategy
- Employee Motivation and Retention Strategy.
- Corporate Social Responsibility Strategy
- Learning and Development Strategy
- Management Development Strategy
- Reward Management Strategy
- Employment Engagement Strategy
- Change Management



Level Three: Senior HR Professional Certification

- Global HRM Overview
- Diversity and Inclusion
- Risk Management
- Industrial Relations
- International Human Resource Management
- Performance Management
- Leadership and Management Development
- Management of Organization Learning and Development
- Organization Behavior
- Health, Safety and Environment
- Human Resource Management Information System.
- International Labor Laws

PHYSICAL INCLASS FEES

Professional Diploma in International Human Resource Management: N105,000 (\$280)

Certified Associate Human Resource Management Professional: N145,000 (\$380)

Certified Global Human Resource Management Professional: N215,000 (\$565)

Account Name: Integrated Institute of Professional Management
Account Number: 1020017605
Bank: United Bank for Africa PLC.

ONLINE PAYMENT: <https://paystack.com/pay/iipmnigeria>

ONLINE FEES

ONLINE OPTIONALFEES							
Course Level	Reg. Fee	Adm. Fee	Tuition Fee	Training Manuals	Exam. Fee	Cert. Fee	
Level 1 3 weekends	N0.00 \$0.00	N0.00 \$0.00	N0.00 \$0.00	N5,000 \$15.00	N23,000 \$60.00	N27,000 \$70.00	
Level 2 4 weekends	N0.00 \$0.00	N0.00 \$0.00	N0.00 \$0.00	N7,500 \$20.00	N25,000 \$65.00	N32,500 \$85.00	
Level 3 5 weekends	N0.00 \$0.00	N0.00 \$0.00	N0.00 \$0.00	N10,000 \$25.00	N32,000 \$85.00	N43,000 \$115.00	

WHAT TO EXPECT



STUDY
100% FREE



SHRM BoCK Global Standard
With FREE Copy of
Most Recent Professional Guide



E-Breaks
and Relaxation



Projected Lectures and
multimedia Integration
With case study analysis sessions.



Quality and Practical-oriented
Training by Quality and
Experienced Professionals



Learn at the comfort
of your home.

Who Should Attend?

This course is designed specifically for those who want to know how to manage people to produce great result; human resource managers, HR practitioners, administrators, accountants, customer service executives, project managers, customer relations managers, ICT professionals, heads, supervisors, CEOs, directors, administrators, business executives, entrepreneurs, consultants and business managers among others.

HEALTH SAFETY AND ENVIRONMENT MANAGEMENT CERTIFIED PROFESSIONAL

Get on top of your career with internationally recognized certification in Health Safety and Environment Management. Become a Certified and Licensed Health Safety and Environment Management Professional.

In Affiliation with Professional Evaluation and Certification Board, Canada.

PECB



First Batch: May 8 - July 10, 2021

Second Batch: Sept. 11 - Dec. 11, 2021

Classes: 100% Online Via Zoom

Apply at

<https://iipmi.org/hse/register>



ABOUT THIS COURSE

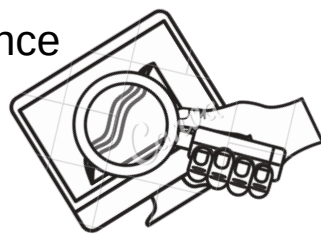
Health and Safety of employees, customers and the general public, is an integral strategic part of business planning, development and management. Safety concerns are seen as very important as negligence can lead to loss of lives, properties, reputation and/or damage to the environment. To keep a better motivated work-force or team, it is paramount to keep safety policies, standards and regulations. In this course, trainees are espoused to skills needed for effective Risk Assessment, Unsafe act auditing, Industrial security and auditing, Accident investigation and reporting, First aid practice, Manual handling, Occupational health, Emergency response, fire safety, Food safety, Job hazard analysis, Hazard Identification and management, Personal protective equipment and risk protective equipment, Plant and machine safety, Stress management, Contractor-employee HSE, Crime management, Crisis management, Confined space management, Journey management, Chemical safety, Construction safety and Safe workplace management among others.

This Course is administered in Three Levels

Basic Health Safety and Environment Certification (BHSE), Associate Health Safety and Environment Certification (AHSE) and Certified Quality Health Safety and Environment Professional (CQHSEP)

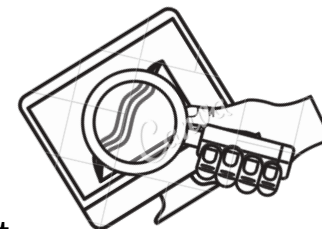
Level One: HSE Diploma Certification

- Introduction to Health Safety and Environment
- Hazard Identification
- Personal Protective Equipment
- Introduction to Emotional Intelligence
- Slips, Trips and Falls
- HSE Planning
- Incidence Reporting
- First Aid Practice (1)
- Basic Fire Safety
- HSE Training and Drills
- Risk Assessment (1)



Level Two: Associate HSE Certification

- Risk Assessment (Part 2)
- HSE Auditing Tools
- Unsafe Act Auditing and Accident Investigation
- Crime Management
- Industrial Security
- Environment and Waste Management
- Cardio-Pulmonary Resuscitation
- Occupational Health and Manual Handling
- Chemical Safety
- HSE Management System
- Field Work and Reporting



Level Three: Certified Quality HSE Professional

- Contractor Employee HSE
- Confined Space Management
- Emergency Response and Planning
- Risk Assessment (Part 3)
- Journey Management System and Defensive Driving
- Crisis Management
- Advanced First Aid Practice
- Advanced Emotional Intelligence
- Stress Management
- Safety Leadership
- Total Quality Management
- Case Studies

PHYSICAL INCLASS FEES

Professional Diploma in Health Safety and Environment Management: N105,000 (\$280)

Certified Associate Health Safety and Environment Management Professional: N145,000 (\$380)

Certified Senior Health Safety and Environment Management Professional: N215,000 (\$565)

Account Name: Integrated Institute of Professional Management
Account Number: 1020017605
Bank: United Bank for Africa PLC.

ONLINE PAYMENT: <https://paystack.com/pay/iipmnigeria>

ONLINE FEES

ONLINE OPTIONAL FEES

Course Level	Reg. Fee	Adm. Fee	Tuition Fee	Training Manuals	Exam. Fee	Cert. Fee
Level 1 3 weekends	N0.00 \$0.00	N0.00 \$0.00	N0.00 \$0.00	N5,000 \$15.00	N23,000 \$60.00	N27,000 \$70.00
Level 2 4 weekends	N0.00 \$0.00	N0.00 \$0.00	N0.00 \$0.00	N7,500 \$20.00	N25,000 \$65.00	N32,500 \$85.00
Level 3 5 weekends	N0.00 \$0.00	N0.00 \$0.00	N0.00 \$0.00	N10,000 \$25.00	N32,000 \$85.00	N43,000 \$115.00

WHAT TO EXPECT



Study and Enjoy
100% FREE ONLINE



IIRSM HSE Global Standard
With FREE Copy of
Most Recent Professional Guide



E-Breaks
and Relaxation



Projected Lectures and
multimedia Integration
With case study analysis sessions.



Quality and Practical-oriented
Training by Quality and
Experienced Professionals



Conducive Learning
Environment

Who Should Attend?

Strategic planners, real estate developers, career persons, ICT experts, engineers, accountants, business executives, all managers, management and financial experts, CEOs, directors, heads of departments, supervisors, safety experts, executives, marine, oil & gas, aviation, agriculturists, medical and health personnel, food and beverage, all in manufacturing and production, and telecommunication workers and others.

CHARTERED INTERNATIONAL MANAGEMENT CONSULTANT (CIMC)

Get Your Direct Chartered Certification from
Chartered Institute of Management Consultant,
USA.

First Batch: Feb. 6 - Mar. 13, 2021
Second Batch: Aug. 7 - Sept. 4, 2021
Weekends Only

Classes: 100% Online Via Zoom

Apply at
<https://iipmi.org/cimc/apply/>

Internationally Accredited By:



ABOUT THIS COURSE

Certified International Management Consultants course is an executive certification course designed for management consultants and top executives across all industries. The course is designed to provide management consultants with the required skills, tools, competencies and knowledge to practice and advance the profession of management consulting all across the world. By being an executive course, it is a non-examination-based certification for suitably qualified associates, senior executives, directors, consultants and CEOs. Participants are trained by high-quality management consultants in different industries as to bring practical relevance to the discussions. The course is a two-weekend duration course; Saturdays and Sundays only delivered online via zoom. Certification is in two categories; Chartered Associate Management Consultant (CAMC) and Chartered International Management Consultant (CIMC). After classes, participants are certified and inducted by the Chartered Institute of Management Consultants, USA.

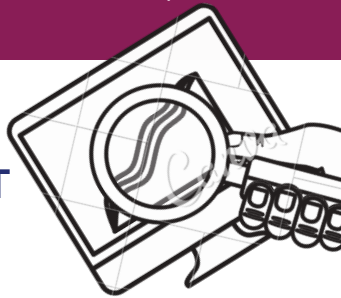
COURSE CONTENTS

CHARTERED ASSOCIATE MANAGEMENT CONSULTANT

- Overview of Management Management Consulting.
- Executive Leadership Development
- Emotional Intelligence for Consultants
- Collaborative Management
- Consumer Behavior
- Enterprise Risk Management
- Service Marketing Management
- Client Relationship Management
- Management Communication
- Values and Ethics

CHARTERED INTERNATIONAL MANAGEMENT CONSULTANT

- Service Model Development
- Strategic Service Pricing and Revenue Management
- Business Intelligence
- Business Process Outsourcing
- Brand Leadership
- Corporate Governance
- Innovation Management
- Blue Ocean Management
- Category Management



PHYSICAL INCLASS FEES

Certified Associate Management Consultant: N125,000 (\$330)

Certified Senior Management Consultant: N150,000 (\$395)

Account Name: Integrated Institute of Professional Management
Account Number: 1020017605
Bank: United Bank for Africa PLC.

ONLINE OPTIONALFEES

ONLINE FEES	Course Level	Reg. Fee	Adm. Fee	Tuition Fee	Training Manuals	Exam. Fee	Cert. Fee
	Associate 4 weekends	N0.00 \$0.00	N0.00 \$0.00	N0.00 \$0.00	N15,000 (\$40)	No Exam Required	N50,000 (\$135)
	Senior 6 weekends	N0.00 \$0.00	N0.00 \$0.00	N0.00 \$0.00	N25,000 (\$65)	No Exam Required	N60,000 \$85.00

ONLINE PAYMENT: <https://paystack.com/pay/iipm>

WHAT TO EXPECT

- Study and Enjoy
100% ONLINE
- CIMC Accredited
Study Packs + Chartered Certifications
+ Chartered Membership from CIMC
- E-Breaks
and Relaxation
- Projected Lectures and
multimedia Integration
With case study analysis sessions.
- Quality and Practical-oriented
Training by Quality and
Experienced Professionals
- Learning Form Comfort

WHO SHOULD ATTEND?

Practising and prospective consultants in all fields, Business executives, project managers, HR managers, Operations managers, all other managers, management and financial experts, CEOs, directors, heads of departments, supervisors and others.

CERTIFIED EMOTIONAL INTELLIGENCE PROFESSIONAL (CEIP)

Get Your Direct Chartered Certification from
Chartered Institute of Management Consultant,
USA.

First Batch: Feb. 6 - Mar. 13, 2021
Second Batch: Aug. 7 - Sept. 4, 2021
Weekends Only
Classes: 100% Online Via Zoom

Apply at
<https://iipmi.org/ei/apply/>

Internationally Accredited By:



ABOUT THIS COURSE

Certified Emotional Intelligence Professional course is an executive certification course designed for business leaders, top and middle level managers and all career persons. The course is designed to provide participants with the required skills, tools, competencies and knowledge to practice and apply emotional intelligence in all areas of business for sustainable growth and development. By being an executive course, it is a non-examination-based certification for suitably qualified associates, senior executives, directors, consultants and CEOs. Participants are trained by high-quality management consultants in different industries as to bring practical relevance to the discussions. The course is a four - six -weekend duration course; Saturdays and Sundays only delivered online via zoom. In-class is also available. Certification is in two categories; Certified Associate Emotional Intelligence Professional (CAEIP) and Certified Senior Emotional Intelligence Professional (CSEIP). All certifications are accredited by Chartered Institute of Management Consultants, USA and Society for Human Resource Management, USA

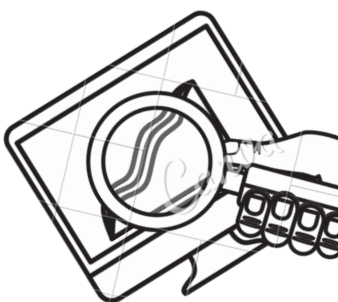
COURSE CONTENTS

CERTIFIED ASSOCIATE EMOTIONAL INTELLIGENCE PROFESSIONAL

- Fundamentals of Emotional Intelligence
- Emotions and Brain
- Emotional Hijack
- Categorization of People
- High IQ and High EQ
- Application of EI at Workplace
- Competencies of Emotional Intelligence
- Boosting Self Confidence
- Effective Group Interactions
- Characteristics of High and Low EI
- Principles of Building Your EQ
- Measures of Emotional Intelligence

CERTIFIED SENIOR EMOTIONAL INTELLIGENCE PROFESSIONAL

- All contents of Associate level +
- Power Continuum
- Behavior Cycle
- Root Cause of Emotions
- Emotional Flooding
- Types of Stroke and Remedies
- Advanced applications of EI in workplace for enhanced productivity.
- Work Life Balance
- Artificial Intelligence



PHYSICAL INCLASS FEES

Certified Associate Management Consultant: N125,000 (\$330)

Certified Senior Management Consultant: N150,000 (\$395)

Account Name: Integrated Institute of Professional Management
Account Number: 1020017605
Bank: United Bank for Africa PLC.

ONLINE PAYMENT: <https://paystack.com/pay/iipm>

ONLINE OPTIONALFEES

ONLINE FEES	Course Level	Reg. Fee	Adm. Fee	Tuition Fee	Training Manuals	Exam. Fee	Cert. Fee
	Associate 4 weekends	N0.00 \$0.00	N0.00 \$0.00	N0.00 \$0.00	N15,000 (\$40)	No Exam Required	N50,000 (\$135)
	Senior 6 weekends	N0.00 \$0.00	N0.00 \$0.00	N0.00 \$0.00	N25,000 (\$65)	No Exam Required	N60,000 \$85.00

WHAT TO EXPECT



Study and Enjoy
100% ONLINE



CIMC Accredited
Study Packs + Chartered Certifications
+ Chartered Membership from CIMC



E-Breaks
and Relaxation



Projected Lectures and
multimedia Integration
With case study analysis sessions.



Quality and Practical-oriented
Training by Quality and
Experienced Professionals



Learning Form Comfort

WHO SHOULD ATTEND?

Practising and prospective consultants in all fields, Business executives, project managers, HR managers, Operations managers, all other managers, management and financial experts, CEOs, directors, heads of departments, supervisors and others.

CERTIFIED EXECUTIVE LEADERSHIP AND MANAGEMENT DEVELOPMENT PROFESSIONAL

Get Your Direct Chartered Certification from
Chartered Institute of Management Consultant,
USA.

First Batch: Feb. 6 - Mar. 13, 2021
Second Batch: Aug. 7 - Sept. 4, 2021

Internationally Accredited By:



Weekends Only
Classes: 100% Online Via Zoom
Apply at
<https://iipmi.org/eld/apply/>



ABOUT THIS COURSE

Certified Executive Leadership and Management Development Professional course is a dual executive certification course designed for business executives, directors, managers and career persons across all industries. The course is designed to provide participants with the required skills, tools, competencies and knowledge to grow and advance their businesses and careers sustainably. By being an executive course, it is a non-examination-based certification for suitably qualified associates, senior executives, directors, consultants and CEOs. Participants are trained by high-quality consultants in different industries as to bring practical relevance to the discussions. The course is a four - six -weekend duration course; Saturdays and Sundays only delivered online via zoom. Certification is in two categories; Certified Associate and Certified Senior : - Executive Leadership and Management Development Professional. All certifications are accredited by Chartered Institute of Management Consultants, USA and Society for Human Resource Management, USA.

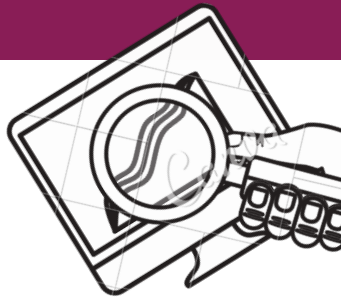
COURSE CONTENTS

CERTIFIED ASSOCIATE EXECUTIVE LEADERSHIP AND MANAGEMENT DEVELOPMENT

- Overview of Executive Leadership
- Fundamentals of Management Development
- Emotional Intelligence
- Executive Communication
- Crisis Management
- Trait Theory of Leadership
- Transactional Leadership
- Situational Leadership
- High Performance Leadership
- Ethical Leadership
- Case Studies

CERTIFIED SENIOR EXECUTIVE LEADERSHIP AND MANAGEMENT DEVELOPMENT

- All of Associate +
- Internal Management Consulting
- Advanced Emotional Intelligence
- Succession Planning
- Quality and Service Excellence
- Advanced Crisis Management
- Diversity Management
- Project Management
- Supervision, Mentorship and Coaching Skills
- Case studies



PHYSICAL INCLASS FEES

Certified Associate Management Consultant: N125,000 (\$330)

Certified Senior Management Consultant: N150,000 (\$395)


Account Name: Integrated Institute of Professional Management
Account Number: 1020017605
Bank: United Bank for Africa PLC.

ONLINE PAYMENT: <https://paystack.com/pay/iipm>


ONLINE OPTIONALFEES

ONLINE FEES	Course Level	Reg. Fee	Adm. Fee	Tuition Fee	Training Manuals	Exam. Fee	Cert. Fee
	Associate 4 weekends	N0.00 \$0.00	N0.00 \$0.00	N0.00 \$0.00	N15,000 (\$40)	No Exam Required	N50,000 (\$135)
	Senior 6 weekends	N0.00 \$0.00	N0.00 \$0.00	N0.00 \$0.00	N25,000 (\$65)	No Exam Required	N60,000 \$160.00


WHAT TO EXPECT




Study and Enjoy
100% ONLINE




CIMC Accredited
Study Packs + Chartered Certifications
+ Chartered Membership from CIMC




E-Breaks
and Relaxation



Projected Lectures and
multimedia Integration
With case study analysis sessions.



Quality and Practical-oriented
Training by Quality and
Experienced Professionals



Learning Form Comfort

WHO SHOULD ATTEND?

Practising and prospective consultants in all fields, Business executives, project managers, HR managers, Operations managers, all other managers, management and financial experts, CEOs, directors, heads of departments, supervisors and others.

INTERNATIONAL MANAGEMENT CONFERENCE²⁰²¹

Registration: <http://www.iipmi.org/conference>

Theme *Innovative Approaches*
**TO PRODUCTIVITY IN A
CHANGING WORK
ENVIRONMENT**

Sponsorship details: conference@iipmi.org Contact: Prof. P.O Uwere @ +2348129178785
Chidike Nnamdi @ +2348020612627

[f iipminternational](#) [t iipminigeria](#) [in iipminternational](#) [g iipminternational](#)

IIPMI... Setting the pace in the training and development industry in Africa.



...committed to deliver on your needs

RC: 1731314

RAYDEN FACILITIES MANAGEMENT AND DEVELOPMENT COMPANY LTD.

Wholly indigenous total
real estate solutions company
and specializes in Facilities
management operations and
Infrastructure development

Block 95 Ijaye Low Cost Housing Estate,
Pen Cinema Agege, Lagos State.
5/7B, Mohammed Mana Street,
off JT Useni Road, Abacha Road,
Mararaba, Nasarawa State.
3, Lobito Crescent,
Wuse 2, Abuja
08034531122, 08029210207, 08038033036, 08069617243, 08033115276, 08036303136
:rayden.facdev@gmail.com

We are committed to deliver on your needs



DIABETES & HYPERTENSION HEALTH SUPPORT SERVICES AFRIQUE DiHHSSA

**A diabetes and
hypertension
management company**



Service Packages:

- Corporate Health Management Programme
- Diplomatic Health Management Programme
- Diabetic Management Center
- Family Health Management Programme
- General Medical Supplies

info@dihhssa.com
+233 245080405 / +233 560448431
www.dihhssa.com



Work, Live and Migrate to

- > CANADA
- > USA
- > AUSTRALIA
- > NEW ZEALAND
- > IRELAND

International Admissions

- > CANADA
- > TURKEY
- > GERMANY
- > UK

We also offer Travel Consulting, International
Admission Immigration Advisory, Trainings and
Project Management

For more enquires contact:
+234 810 116 4006, +234 908 528 4668, +234 909 999 4236
Suite Gf6, vicdomdon plaza, Opposite Hendon
College, Karu, Abuja.

www.sarajohn.org info@sarajohn.org [@ sarajohnng](#)